

March 2008

Volume 1, Issue 1



County of Sacramento, Division of Public Health

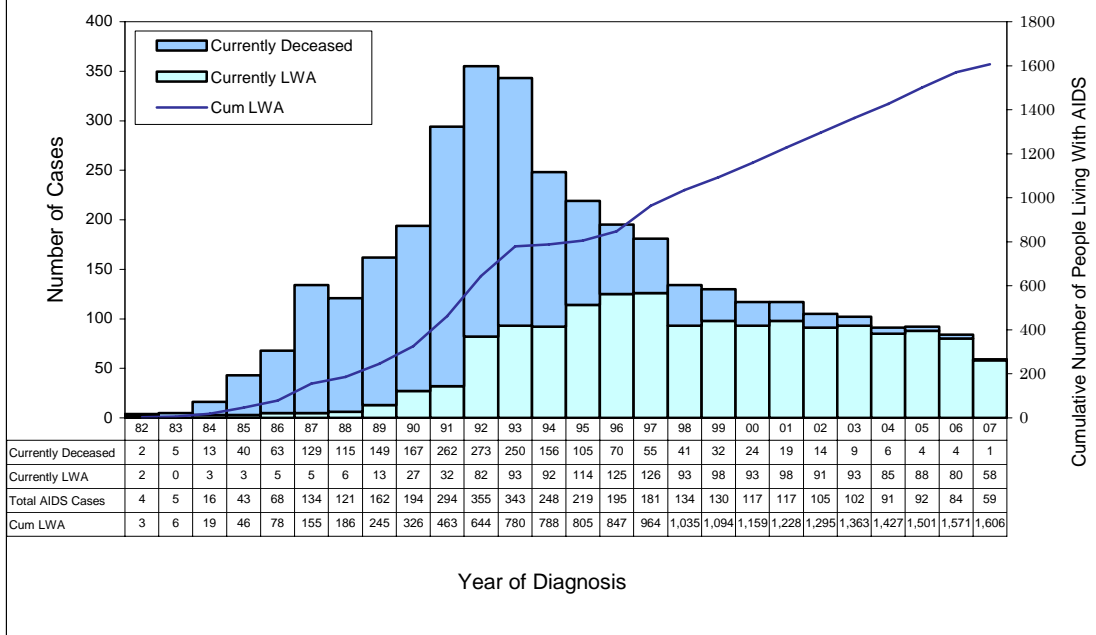
AIDS Quarterly Surveillance Report

County of Sacramento Quarterly AIDS Report

Case Summary Report:

- The County of Sacramento has collected Acquired Immune Deficiency Syndrome (AIDS) data since 1982. By the end of 2007, there were a total of 3,613 cumulative cases of AIDS reported to the County of Sacramento, of those cases, 2,010 (55.6%) are deceased, and 1,603 (44.4%) are currently living with AIDS. During the fourth quarter of 2007 (October 2007 to December 2007), 15 new cases of AIDS were reported in the County of Sacramento.
- Of the 15 new AIDS cases, 6 (40.0%) were Caucasian, 5 (33.3%) African American, 3 (20%) Hispanic, and 1 (6.7%) Asian and Pacific Islander.
- From 1982 to 1992 the annual number of reported AIDS cases increased dramatically from 4 to 355 and gradually decreased from 355 in 1992 to 59 in 2007.
- The AIDS incidence rate increased from 7.4 per 100,000 in 1986 to 32.4 per 100,000 in 1992, and subsequently declined from 32.4 per 100,000 in 1992 to 5.9 per 100,000 in 2006.

**Cumulative AIDS Cases by Vital Status
County of Sacramento, 1982 - 2007**



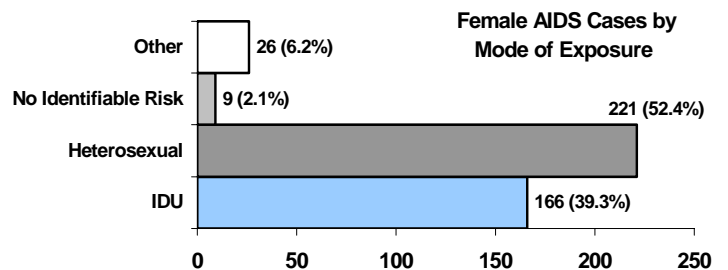
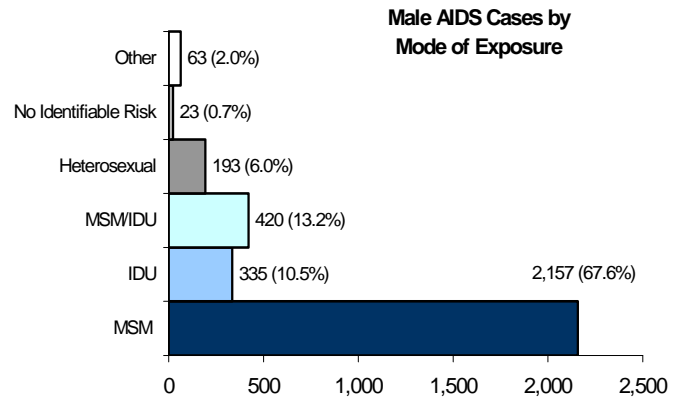
Cumulative cases living with AIDS (Cum LWA): Calculated by subtracting deaths that occurred during the given diagnosis year (includes deaths for individuals who died the same year that they were diagnosed as well as for individuals who died during that particular 'Diagnosis Year', but were actually diagnosed during the previous year) from the 'Total' AIDS cases for that 'Year of Diagnosis', and adding cumulative across all years.

LWA: Persons living with AIDS

Data source: County of Sacramento, Department of Health and Human Services, Division of Public Health: HIV/AIDS Case Registry system (HARS) as of 2/26/2008.

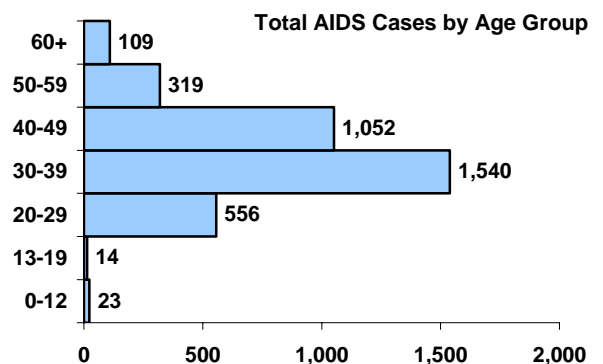
Cumulative AIDS Cases by Mode of Exposure, 1982-2007

- From 1982 to 2007, the majority of cumulative AIDS cases for males reported exposure to Human Immunodeficiency Virus (HIV) through men having sex with men (MSM) (67.6%), followed by men having sex with men who were injection drug users (MSM/IDU) (13.2%), injection drug users (IDU) (10.5%), heterosexual contact (6.0%), other modes of exposure (2.0%) and no identifiable risk (NIR) (0.7%).
- Of the 422 female AIDS cases, the majority reported exposure to HIV through heterosexual contact (52.4%), followed by IDU (39.3%), other risk (6.2%) and NIR (2.1%).



Cumulative AIDS Cases by Age Group, 1982-2007

- Of the reported 3,613 AIDS cases, the majority occurred among persons aged 30-39 years (1,540 cases), followed by persons aged 40-49 years (1,052 cases), 20-29 years (556 cases), 50-59 years (319 cases), 60 years and older (109 cases) and persons less than aged 20 (37 cases).



• **Cumulative AIDS Cases by Mode of Exposure and Race/Ethnicity 1982-2007**

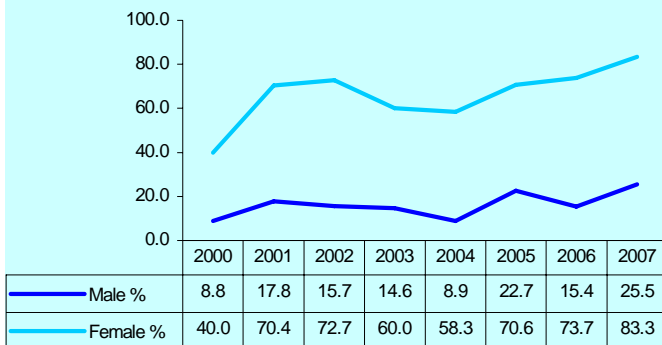
The principal mode of exposure across all racial and ethnic groups is MSM. Caucasians reported that the second most frequent exposure to HIV was due to MSM/IDU (13.6%), followed by IDU (9.2%), whereas African Americans reported that

the second most frequent exposure to HIV was due to IDU (27.8%) followed by heterosexual contact (23.8%). Hispanics reported that the second most frequent exposure to HIV was heterosexual contact (14.5%) followed by IDU (13.7%).

Mode of Exposure	Caucasian		African American		Hispanic		Asian/PI		AIAN		Unknown		Overall	
	#	%	#	%	#	%	#	%	#	%	#	%	#	%
MSM	1,560	68.3	283	35.4	253	60.0	40	58.8	13	43.3	8	72.7	2,157	59.7
IDU	210	9.2	222	27.8	58	13.7	3	4.4	8	26.7	0	0.0	501	13.9
MSM/IDU	311	13.6	63	7.9	38	9.0	3	4.4	5	16.7	0	0.0	420	11.6
Hetero	139	6.1	190	23.8	61	14.5	20	29.4	3	10.0	1	9.1	414	11.5
No Identifiable Risk	13	0.6	11	1.4	5	1.2	1	1.5		0.0	2	18.2	32	0.9
Other	50	2.2	30	3.8	7	1.7	1	1.5	1	3.3	0	0.0	89	2.5
Total	2,283	100	799	100	422	100	68	100	30	100	11	100	3,613	100

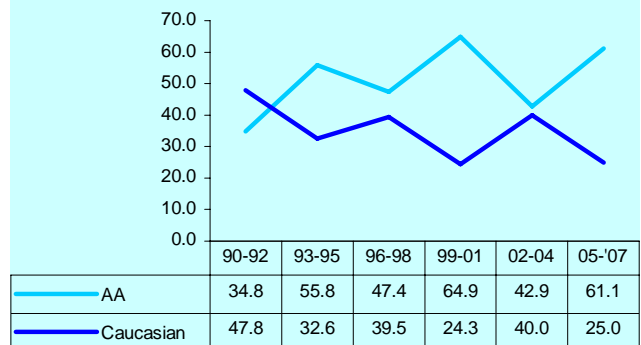
AIAN=American Indian and Alaskan Native
Asian/PI=Asian and Pacific Islanders

Heterosexual Contact by Gender, Sacramento County, 2000-2007



From 2000 to 2007, the percent of cases reporting heterosexual contact as a risk factor increased for both males and females. Over the same time span, the percent of female AIDS cases was more than three times higher than male AIDS

Heterosexual Contact Among Females by Race, Sacramento County, 1990-2007



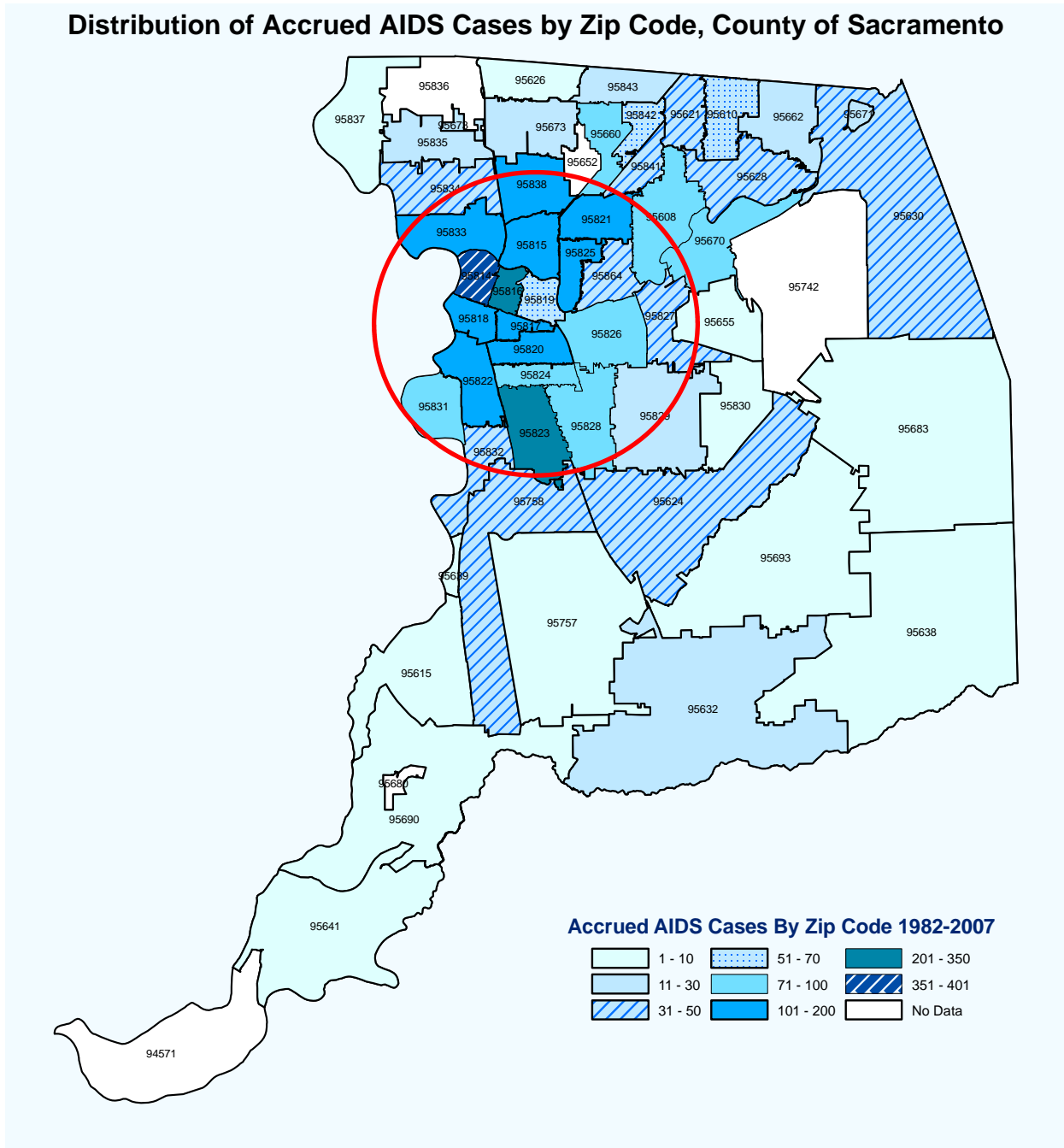
cases. The percent of AIDS cases reporting heterosexual contact among African American females increased 75.6%, whereas the percent of heterosexual AIDS cases among Caucasian females declined.

- Accrued AIDS Cases by Zip Code

From 1982 to 2007, the 95814 zip code had the highest number of accrued AIDS cases between 351-400, followed by zip code 95816 and 95823 (between 201 to 350). The following zip codes have between 101-

200 accrued AIDS cases; 95815, 95817, 95818, 95820, 95821, 95822, 95825 95833 and 95838. The area within the red circle, shows where over 80% of accrued AIDS cases are distributed.

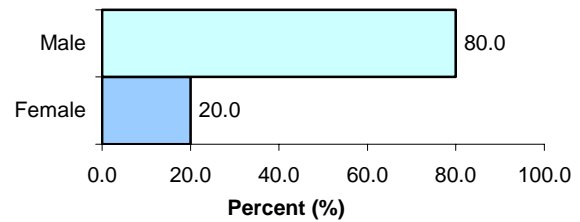
Distribution of Accrued AIDS Cases by Zip Code, County of Sacramento



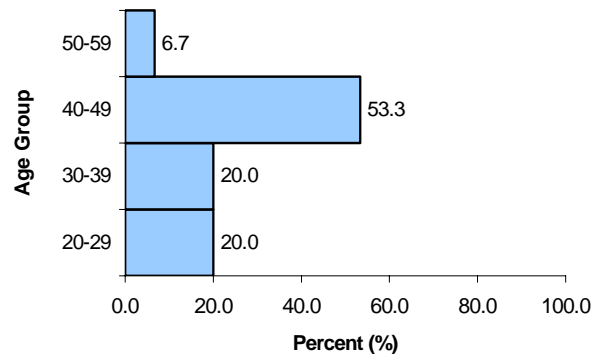
*Accrued AIDS cases defined as the total number of AIDS cases reported since 1982

- Newly Diagnosed AIDS Cases, Fourth Quarter of 2007**

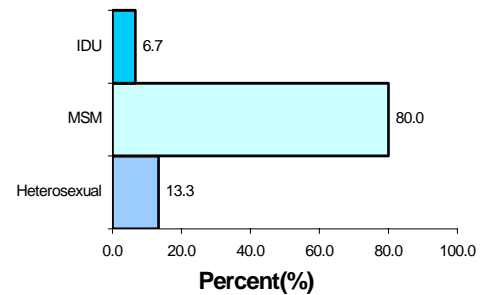
- A total of 15 newly diagnosed AIDS cases were reported in the fourth quarter of 2007. Of these cases, 3 (20%) were female and 12 (80%) were male.



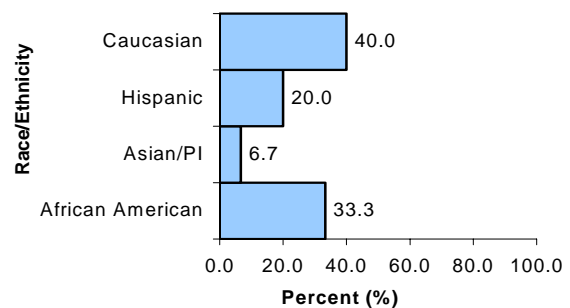
- The majority of newly diagnosed AIDS cases in the fourth quarter (53.3%) were aged 40 to 49 years.



- Of 2007 fourth quarter AIDS cases 80% reported MSM as the primary mode of exposure to HIV followed by heterosexual contact (13.3%), and IDU (6.7%).



- Among the newly diagnosed AIDS cases for the fourth quarter of 2007, 40.0% were Caucasian, 33.3% were African American, 20.0% were Hispanic, and 6.7% were Asian Pacific Islanders.

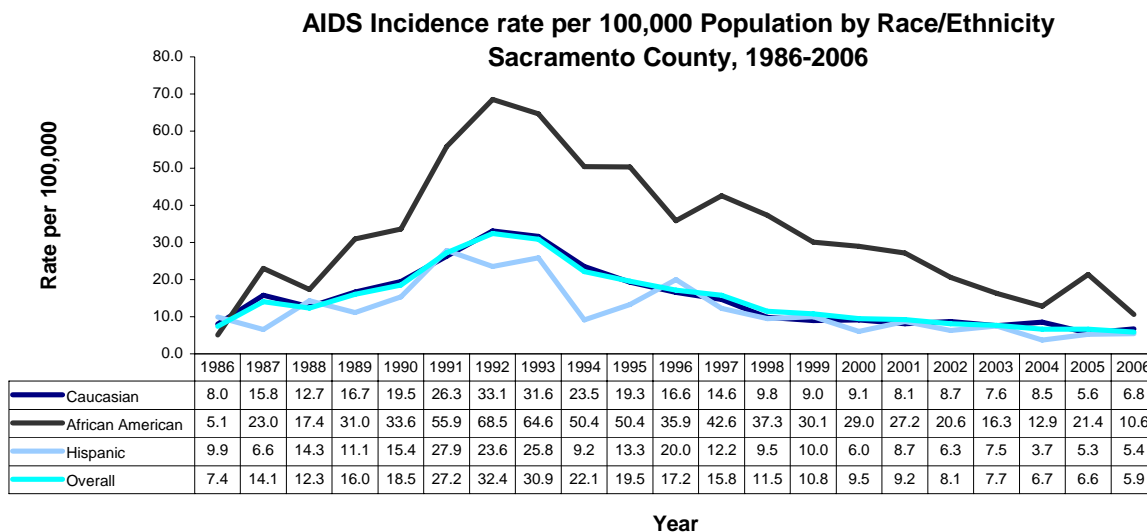


- In the fourth quarter of 2007, there were seven AIDS deaths that were all diagnosed in previous years. The seven decedents lived with AIDS from 6 to 20 years. There were no deaths among newly diagnosed AIDS cases in the fourth quarter of 2007.

- AIDS Incidence Rate per 100,000 Population by Race/Ethnicity**

Over the past 20 years, the AIDS incidence rate for Sacramento County increased from 7.4 per 100,000 in 1986 to a high of 32.4 per 100,000 in 1992. Subsequently, the AIDS incidence rate gradually declined to 5.9 per 100,000 in 2006. The AIDS incidence rate by race and ethnicity varied.

From 1987 to 2006, African Americans had the highest incidence rate across all racial and ethnic groups. The AIDS incidence rate among Caucasians is similar to the overall rate for Sacramento County, whereas the AIDS 2006, incidence rate for Hispanics is the lowest



Any resident of the County of Sacramento seeking a HIV test has the right to remain anonymous. A health care provider shall confidentially refer such persons to a site which provides anonymous testing. Both confidential (with name) and anonymous testing (without name) are allowed at state-funded Counseling, Testing, Referral and Partner Counseling (CTR/PCRS) sites.

Anonymous Testing

Alternative Test Site, 1500 C Street, (916) 874-7720

Confidential Testing Sites

- Capital Health Center, 1500 C Street, (916) 874-5303
- Care-A-Van, Call for locations, (916) 875-6212
- Del Paso Health Center, 3950 Research Drive, (916) 648-0970
- El Hogar, Inc., 1400 North A Street, (916) 440-1500
- Mapp, Inc., 4241 Florin Road, Ste. 110, (916) 394-2724
- Northeast Health Center, 7805 Auburn Blvd, (916) 969-2724
- Oak Park Health Center, 3415 Martin Luther King Jr. Blvd., (916) 875-2995
- Primary Care Center, 2921 Stockton Blvd, (916) 874-9670
- South City Health Center, 7171 Bowling Drive, Ste. 300, (916) 875-0801
- Harm Reduction Services, Call for locations, (916) 456-4849
- Breaking Barriers, 2020 V Street, (916) 447-2445



**County of Sacramento
Board of Supervisors**

Roger Dickinson, District 1
Jimmie R. Yee, District 2
Susan Peters, District 3
Roberta MacGlashan, District 4
Don Nottoli, District 5

Terry Schutten, County Executive

www.saccounty.net

**Department of
Health & Human Services**

Lynn Frank, Director

County Health Officer

Glennah Trochet, M.D.

www.scph.com

Epidemiology Program Manager

Cassius Lockett, Ph.D., MS

Prepared by

Helen Zheng, MPH